



Shenzhen MCD Electronics CO.,Ltd

MCD-8065

MCD 美创达诚

Shenzhen MCD Electronics co.,ltd

CE ISO 9001 2008



MCD-8065
X-ray baggage scanner



Quantity comes from **MCD** , Honesty shows all the world



Shenzhen MCD Electronics CO.,Ltd

Product Parameters:

General Specification

- 1.Tunnel Size: 800(W)*650(H)mm
- 2.Conveyor Speed: 0.22m/s
- 3.Conveyor Max Load: 200kg
- 4.Dose per Inspection: <1.6uGy/h
- 5.Resolution: <0.0787mmMetal Wire
- 6.Spatial resolution Level:dia1.3mm , Vertical:dia1.0mm
7. Penetrate resolution: Dia 0.254mm
- 8.Penetration: 40mm Steel
- 9.Film Safety: Guarantee ISO1600 Film
- 10..X-ray Leakage: <0.1 uGy/h (at a distance of 5cm From external housing)

X-ray Generator

- 1.Generate direct: Downward
- 2.Generate angle: 80 degree
- 3.Anode Voltage: 100~160Kv
- 4.Anode power: 0.4 to 1.2mA
- 5.Cooling / Duty Cycle: Oil Cooling /100%

Image System

- 1.X-ray Sensor: L-Shaped Photodiode Array (monoenergetic) , 12bit Deep
- 2.Monitor: High Resolution Color, LCD Accord, 17 inch
- 5.Image Processing: Edge enhancement, image strengthening, image lightening, reducing darkening, image returning, image retrieval.
- 6.Image Grey Level: 4096
- 7.Image Max Resolution: 1024 * 1280 pixel
- 8.Image Processing: 24bit for processing real time
- 9.Image storage: Storage 60000 pictures in real time
- 10.Zones & Zoom: 1-9 Image regions, 2,4,8,16 Times Enlarge, Whole screen continuous observation
- 11.Multi-energetic distinguish objects: organic objects in orange, Inorganic objects in blue, mixture in green
- 12.High-energy/low energy: switch from high energy to low energy
- 13.Assist to detect drug and explosive powder

Quantity comes from MCD , Honesty shows all the world



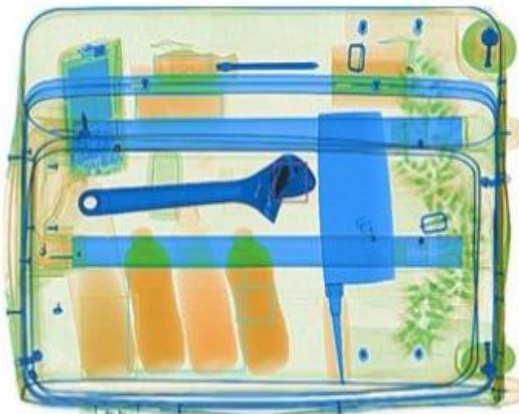
Shenzhen MCD Electronics CO.,Ltd

Installation Data

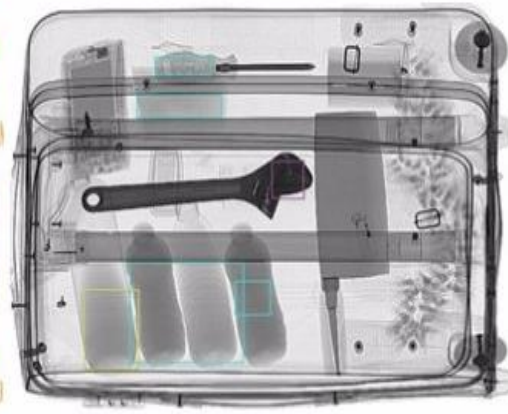
1. Operating Temperature/Humidity: 0°C ~ 45°C / 20% - 95% (non-condensing)
2. Storage Temperature/Humidity: -20°C ~ 60°C / 20% - 95% (non-condensing)
3. Operation Power: 220AVC / (± 10) 50Hz ± 3 Hz
4. Power Consumption: 1.0KW (Max)
5. Noise: < 58 dB

Feature and Application:

X-ray penetrate inspection, the object can be found within the metal structure, can display the naked eye can not see where the liquid is also very obvious object display. Used in the factory testing of security products and business units such as: electronic factories, shoe factories, toy factories, courts, railway stations, and event bag, line security management package



Color image display



Black and white images display

Quantity comes from **MCD**, Honesty shows all the world